



OVERGAARD LTD

Complete Facade Systems



WE DELIVER ARCHITECTURAL AMBITION

MISSION

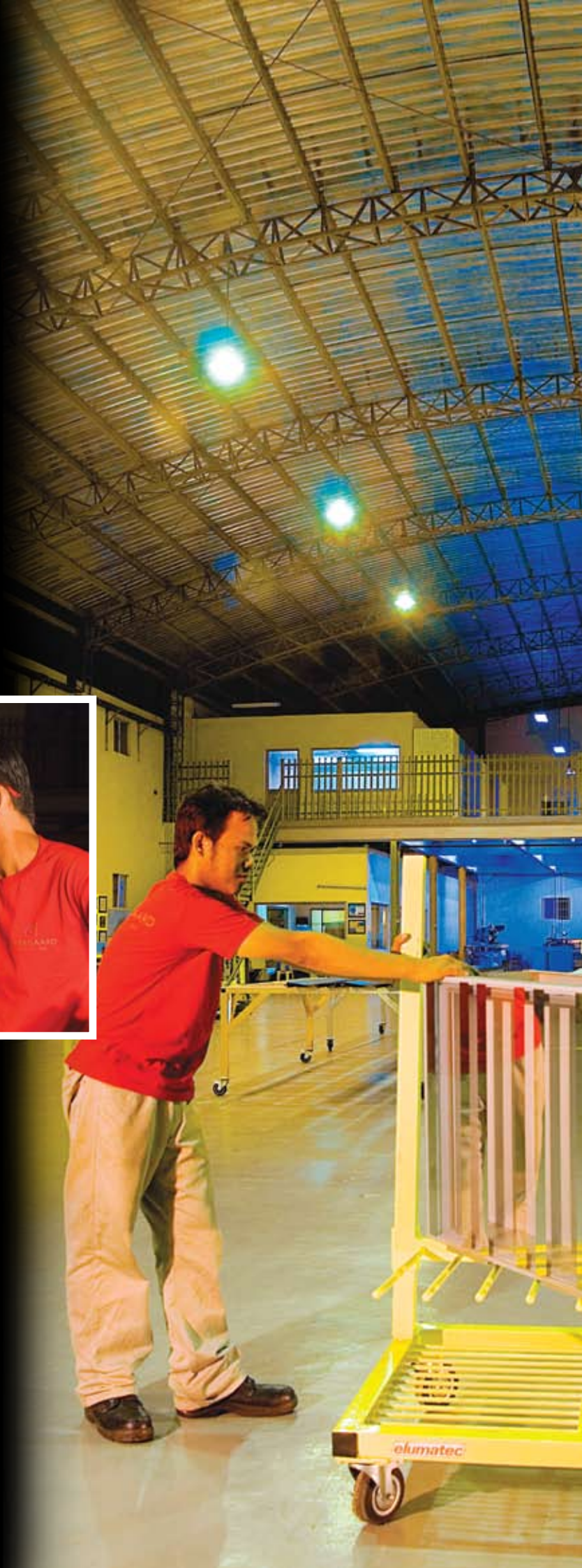
Overgaard strives to exceed client expectations in design, manufacture and delivery of high performance façade systems and building components internationally.



SERVICES

Overgaard Limited was established in 2003 as an international architectural façade design and manufacturing company, offering a diverse range of services including:

- Complete Envelope Façade Systems.
- Custom Made Building Components.
- Fabrication and Assembly.
- Specialised Design and Engineering.
- Project Management.
- Quality Control Systems.



EXPERTISE

Mr. Torben Overgaard President and Founder. Earned his architectural and engineering accreditation in Denmark, where he is a long standing member of the respected Danish Association of Professional Engineers. His specialisation in the field of façade consultation and design spans more than 35 years in the international market place, where his work on numerous prestigious projects has generated industry wide renown.

Mr. John Bradley, Managing Director and Partner. Educated in Scotland and Germany and has over 30 years of experience in material selection, fabrication techniques and project management expertise. Since 1997 he has developed an extensive intercultural network of industry partners in the Asian region, successfully negotiating business contracts.

Mr. Rodolfo Tan Jr., Vice President and Partner. Achieved his Bachelor of Science in Civil Engineering with post graduate studies in Civil and Structural Engineering. He is a member of the Association of Structural Engineers of the Philippines and the Philippine Institute of Civil Engineers. He contributes over 20 years experience to the partnership, overseeing Overgaard Technical Services Inc., in Manila, Philippines.



Mr. Torben Overgaard



Mr. John Bradley and Mr. Rodolfo Tan Jr.

LOCATIONS

Hong Kong - Strategic International Base:

- Management of financial and client contractual aspects of all projects worldwide.
- Optimal positioning for efficient overseeing of China's established manufacturing market.
- Operates a quality control team, managed by American and European experts, to ensure project materials are manufactured in strict compliance with relevant international building codes and standards.

Manila, Philippines - Corporate Design and Engineering Base:

- Employing over 40 English speaking professionals, managed by an international team of experts.
- Permitting cost efficient custom engineering solutions, to ever increasing architectural and technical challenges, faced by the international façade industry.

Subic Bay Freeport Zone, Philippines - Fabrication and Assembly Base:

- Developed infrastructure and westernised labour pool, as a product of almost a century of operations by the largest US Naval base outside of North America.
- Philippine's premiere Freeport Zone offering cost incentives.
- Efficient international transportation links via the recently commissioned modern sea container port facility and ready access to international air courier services.
- Established material and service suppliers.

Germany - European and Middle East Base:

- Regional marketing and sales.
- Client support.
- Specialised façade manufacturing and consulting.
- Material sourcing.



PROJECT SUMMARY

Worldwide, Overgaard has acquired a reputation for developing specialised solutions to unique and challenging façade projects. Overgaard's Engineers work closely with architect's designs to realise their creative vision. Projects success is ensured through teamwork. Overgaard's policy dictates that engineering and manufacturing schedules are strictly adhered to, through maintaining a close practical working relationship with construction professionals. Some representative projects are outlined below:

One Island East, Hong Kong

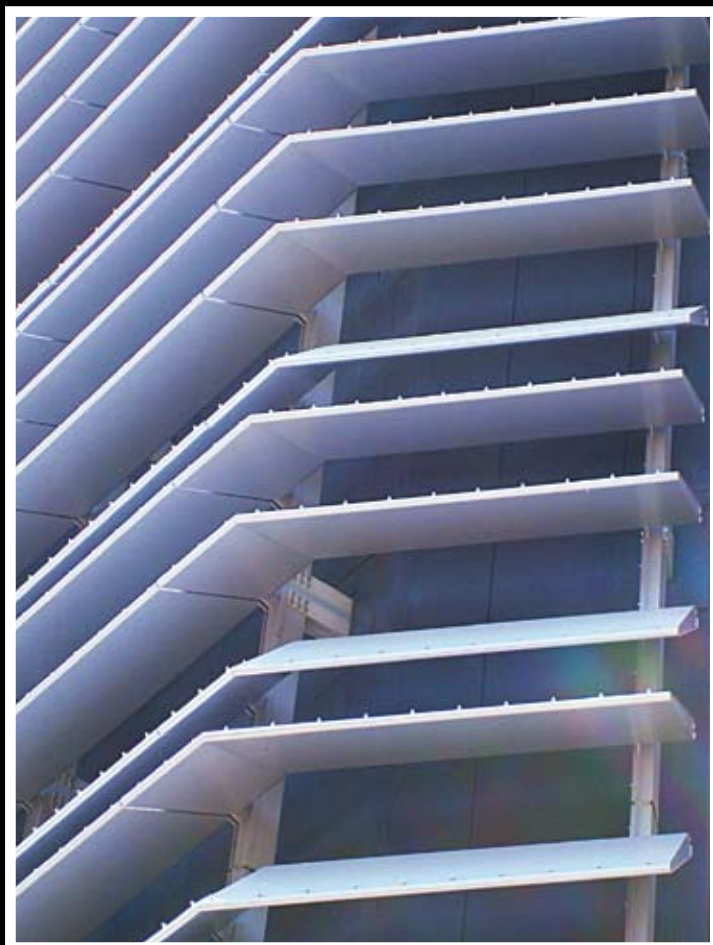
Is an ultra modern 70 story skyscraper that compliments the world famous Hong Kong skyline. Overgaard was tasked with the responsibility for the design, manufacture and delivery of over 5,600m² of colour consistent natural anodized aluminium panels together with the support system. Of particular note are the special 3D curved feature panels in the main and sky lobby areas.



Sprint Arena, Kansas City, Missouri, USA

Overgaard custom designed, detailed and supplied the complete exterior glass façade system, including all metal panels and accessories for the adjacent buildings. Over 13,000m² of insulated glass and 200 tonnes of profiles, resulting in 2,404 individual glass curtain wall units for the bowl shaped arena were pre-assembled and shipped sequentially from Asia to USA.



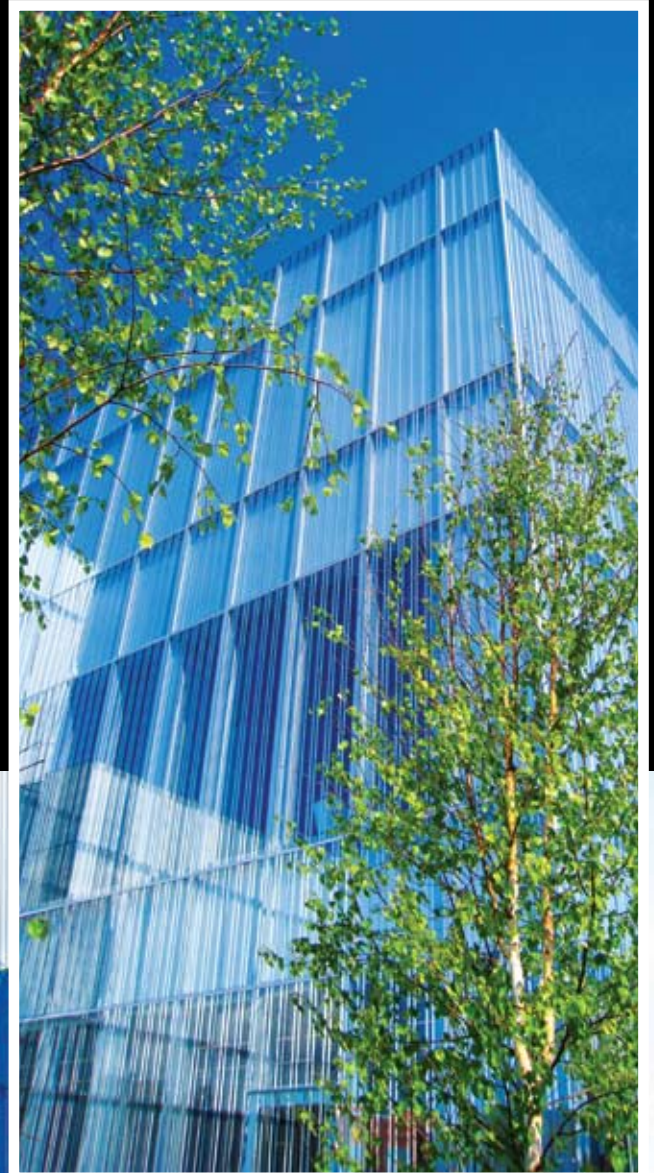


**New Meadowlands Stadium,
East Rutherford, New Jersey,
USA**

Is a new 82,500 capacity stadium, which will be the home to both the New York Giants and New York Jets American football teams. Overgaard was awarded the design and supply of this façade, which comprised a distinctive outer skin of aluminium louvers together with a custom supporting system, as an outcome of value engineering. Overgaard manufactured 7,500 individual louvers and support system which utilised over 110 linear kilometres of aluminium system extrusions and over 370 tonnes of PVDF coated aluminium sheet.

**Anchorage Museum of History and Art,
Alaska, USA**

The Architect's aesthetic vision coupled with the extreme climatic conditions in Alaska demanded that the design from Overgaard resist significant structural thermal movement, while ensuring an energy efficient environment within the building. The result was a unique structure with an appealing reflective appearance when viewed externally, but a non-reflective clear anodized appearance from within.





King Abdullah University of Science and Technology (KAUST), Saudi Arabia

Is currently the world's largest terracotta facade project, with over 120,000m² of terracotta tiles. Overgaard supplied the entire façade support system which comprised over 3 million various components and included in excess of 100 tonnes of aluminium profiles. The demands imposed by the five month intensive construction and supply schedule dictated the meticulous planning of supply, quality control and delivery logistics. The entire project was successfully air freighted to the site within the contracted period.

Fairbanks International Airport, USA

Located in an area with tectonic shifts, seismic building regulations dictated a custom glass curtain wall designed to safely absorb potential seismic movements, while successfully interacting with an already existing building structure. Maintaining consistent interior temperatures during building operation was a key design factor due to the extreme annual thermal variances of -65°F to $+100^{\circ}\text{F}$. This was achieved through intelligent design and material selection, which included triple glazed insulated glass units with frit and high performance thermal breaks. The façade system was supplied in a unitised manner to reduce installation period and mitigate disturbance to the operational airport during construction.



Overgaard Ltd.

Unit 1302, 13/F, Asia Orient Tower,
33 Lockhart Road, Wanchai, Hong Kong
Tel.: +852 2770 8873
Fax: +852 2770 9037
Email: info-contact@overgaard-ltd.com

Overgaard Technical Services Inc.

10/F, The Aurora Milestone Building,
1045 Aurora Blvd,
Quezon City, Philippines
Tel.: +63 2913 4694
Fax: +63 2913 4824

Overgaard Subic Inc.

9B, Lot 22 and 38 Efficiency Avenue,
Subic Bay Gateway Park, Phase 1,
Subic Bay Freeport Zone,
Philippines
Tel. & Fax.: +63 47 252 1847
Email: info@overgaard-subic.com

Overgaard Ltd.

Wikingerstr.12d,
53332 Bornheim,
Germany
Tel.: +49 2236 870344
Fax: +49 2236 870346

www.overgaard-ltd.com



OVERGAARD LTD
Complete Facade Systems